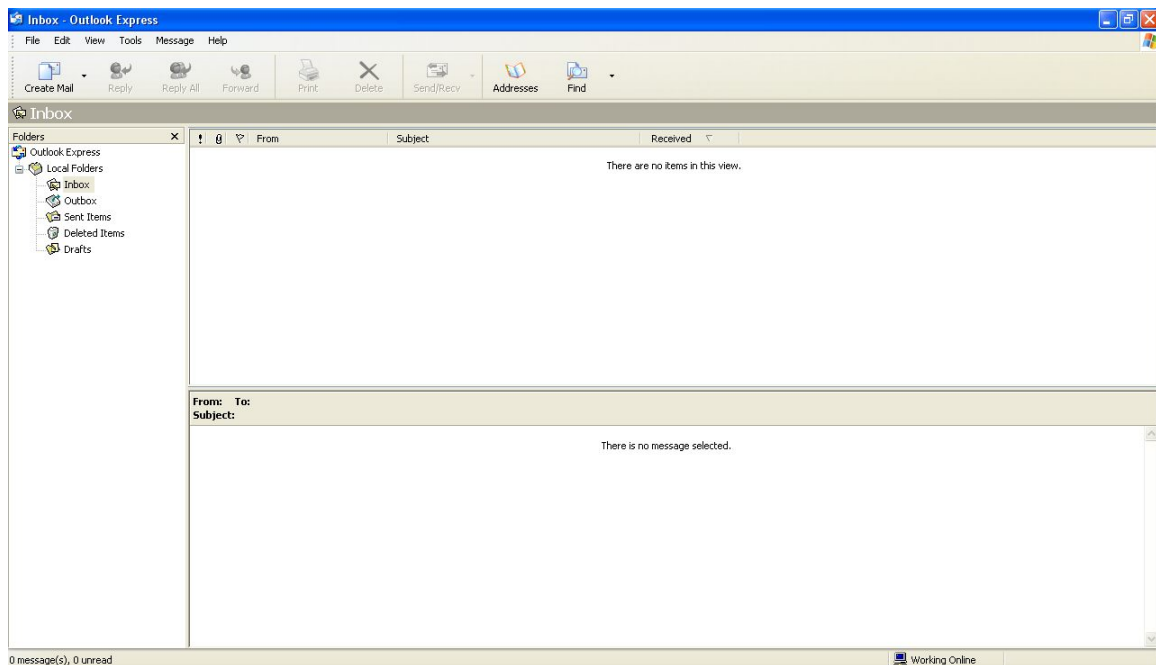


We have upgraded our servers and need to make 2 changes:

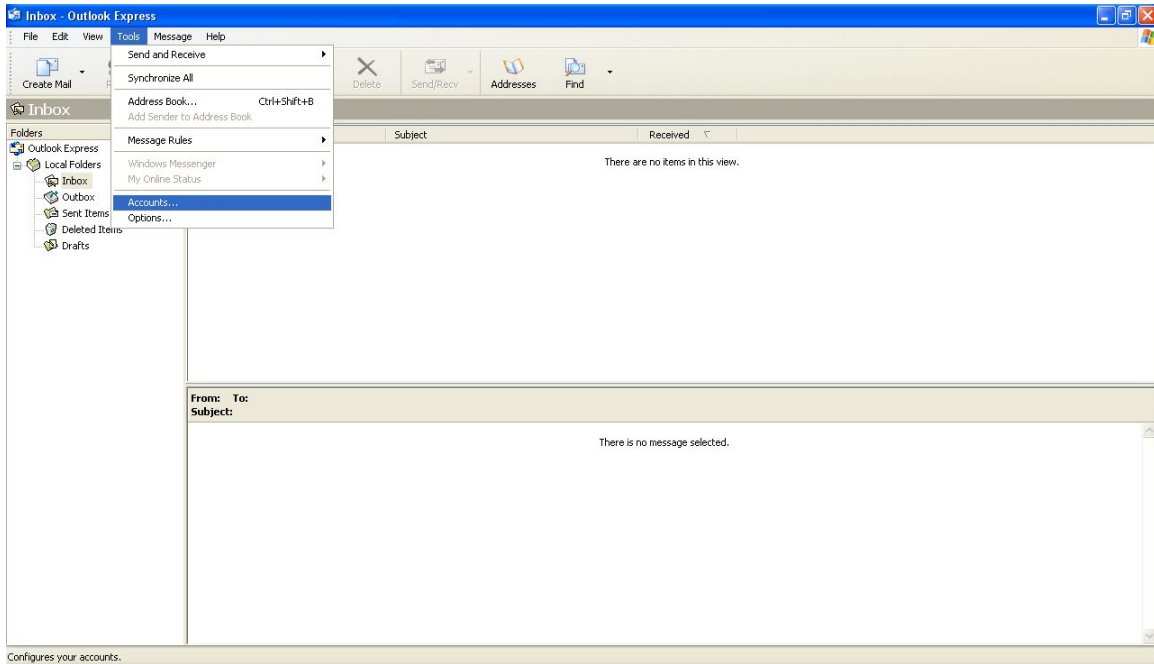
1. Add @comsouth.net to your Account Name
2. Check the box “My outgoing Server requires authentication”

The reasons for these changes are many. In our fight to curb spam we are now requiring a password to send an E-Mail out. This should slow down viruses and outsiders from our network to be able to send spam through our servers. This will also keep us off blacklists. These lists are created by good intending sites that are also in a war against spam. However they blacklist companies simply if you do not authenticate your outgoing mail. Many ISP's use these blacklists and it disrupts the flow of good e-mail when you get on these lists. We are also offering larger mailboxes to accommodate more and larger e-mail. The separate Postini spam filtering will be incorporated to a GreyMail filtering. This will also offer real-time Virus protection. This does not mean you do not need protection on your PC, it only means one more level of protection. Personal Web Space and N Drive are also two new added value features.

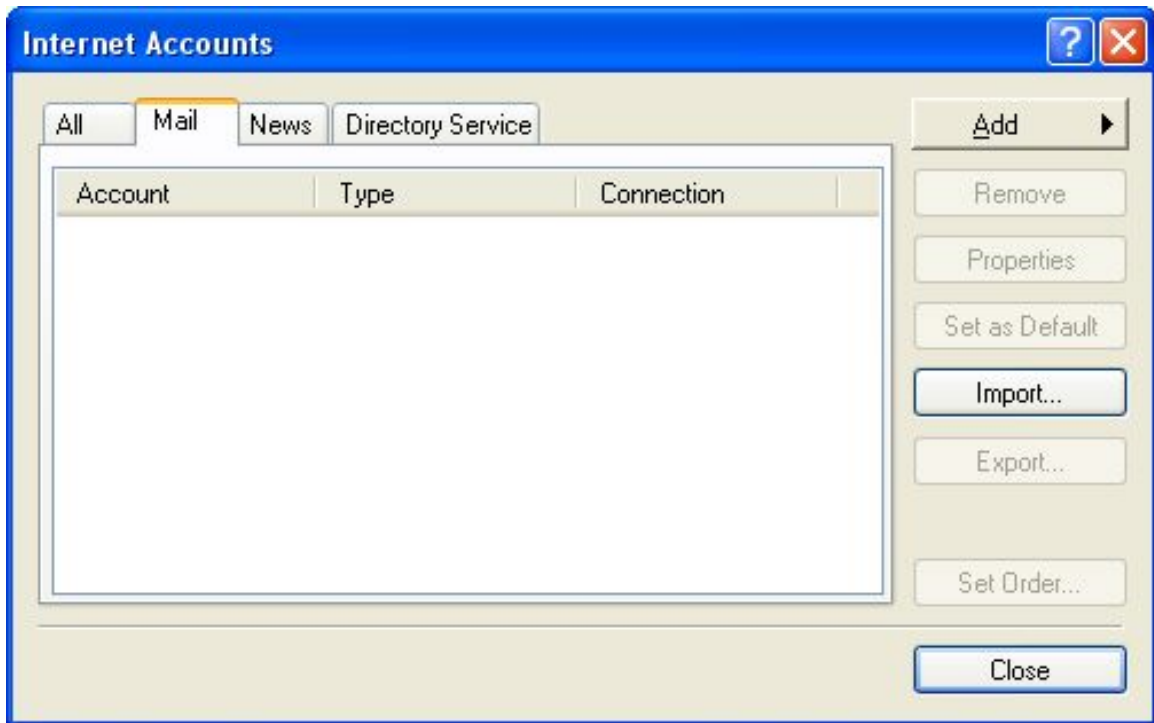
The steps below are screen shots while setting up @comsouth.net E-Mail settings for Outlook Express



Click on tools




Accounts



Click on the mail tab and then Add

If you have a @comsouth.net account already in place go to step after finish.

Internet Connection Wizard 

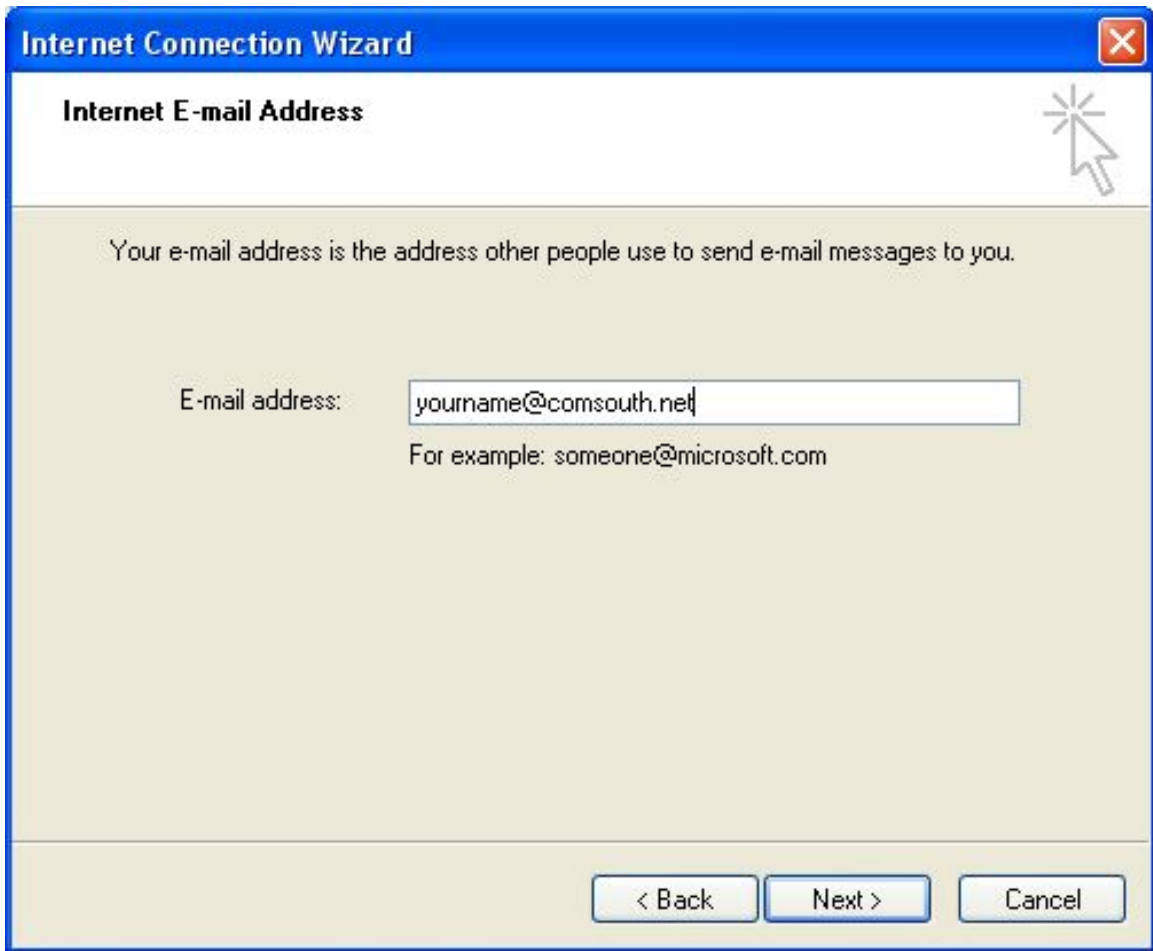
Your Name 

When you send e-mail, your name will appear in the From field of the outgoing message.
Type your name as you would like it to appear.

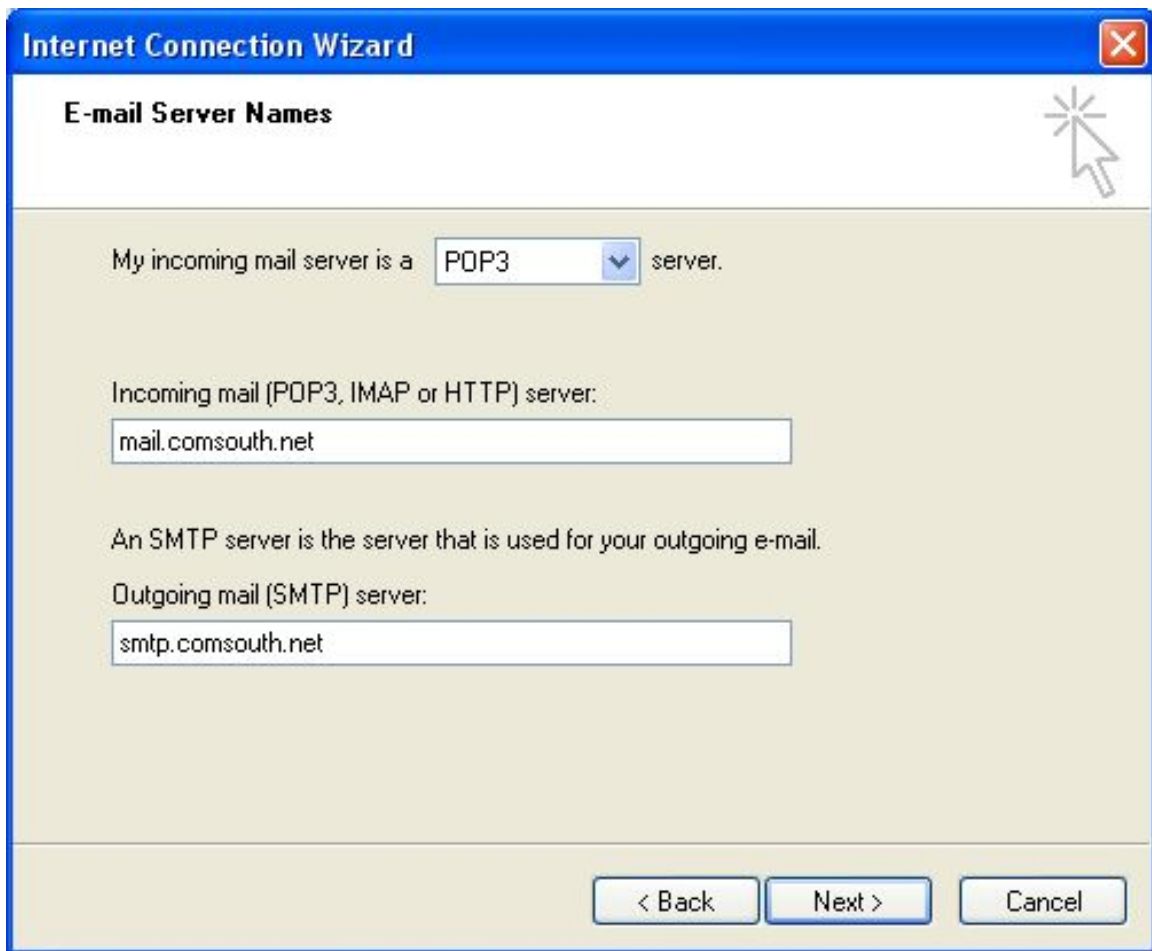
Display name:

For example: John Smith

Type in your name as it will look on the internet and then next



Your account name @comsouth.net and click next



POP3 will be there, mail servers:

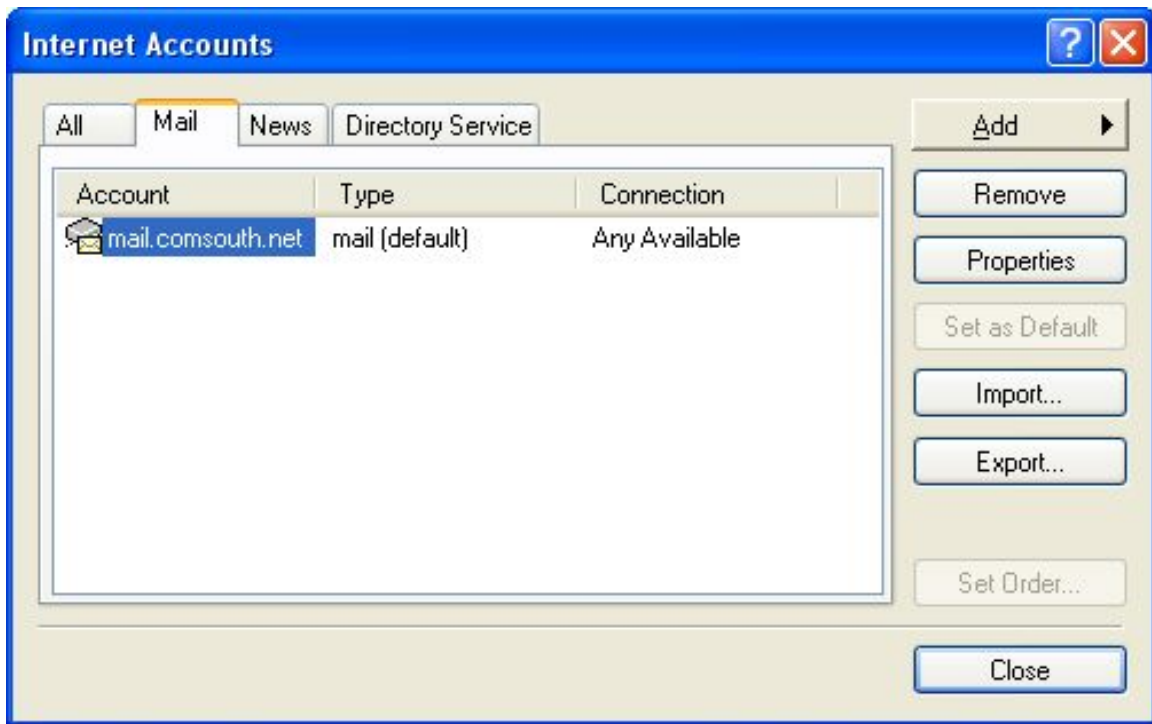
Incoming: mail.comsouth.net

Outgoing: smtp.comsouth.net

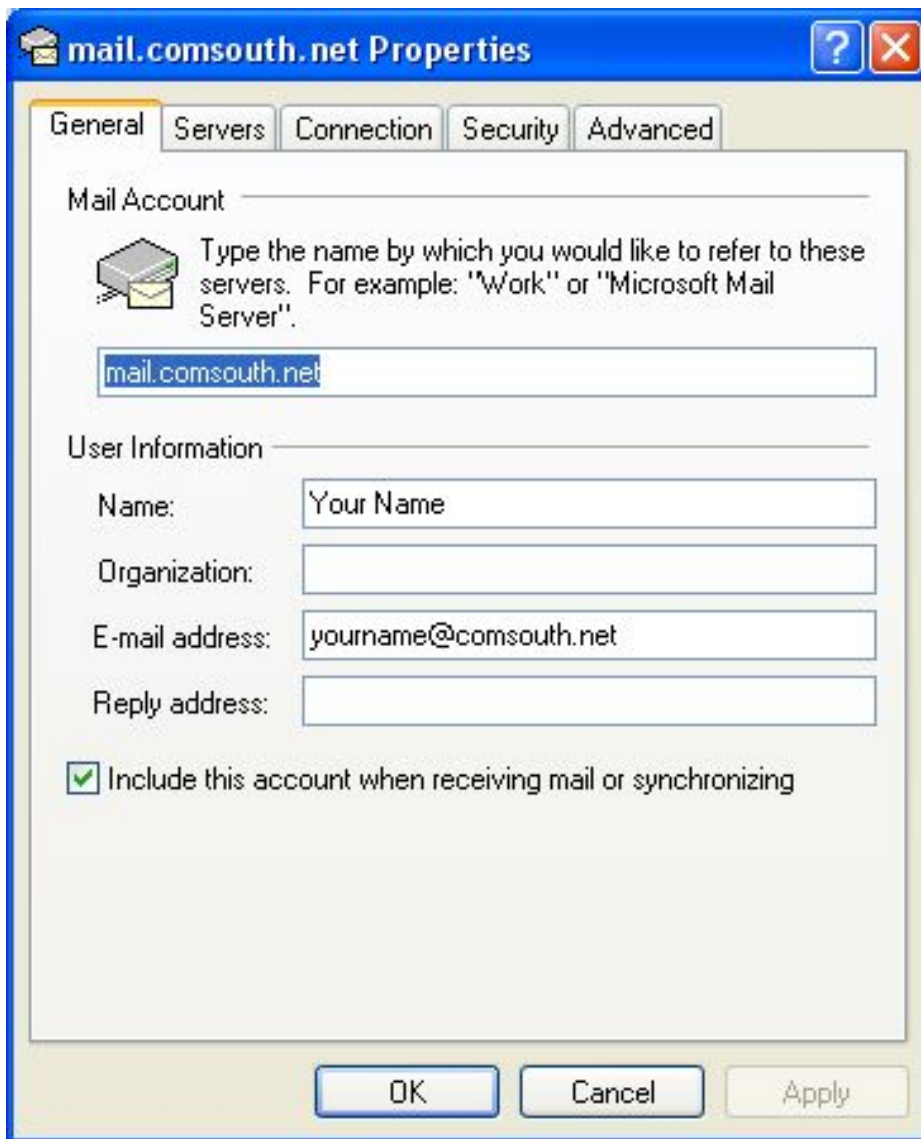
Click next



Click Finish (but you are not at this point)



Go back in and click on properties



Click on Servers Tab



Make sure servers are listed exact as above:

Incoming POP3: mail.comsouth.net

Outgoing SMTP: smtp.comsouth.net

Make sure @comsouth.net is after your account name

Check the Box “My Server requires authentication”

Click Apply then OK and repeat OK to close out.